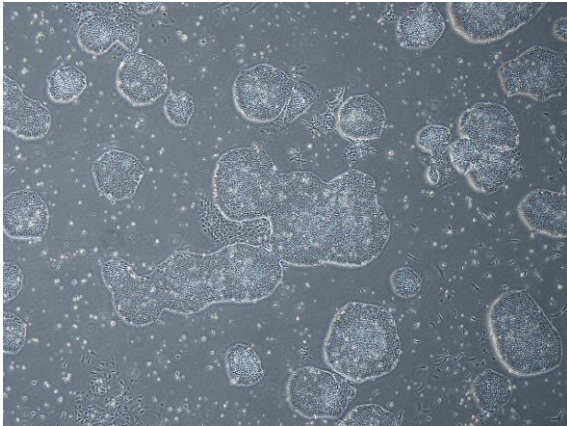
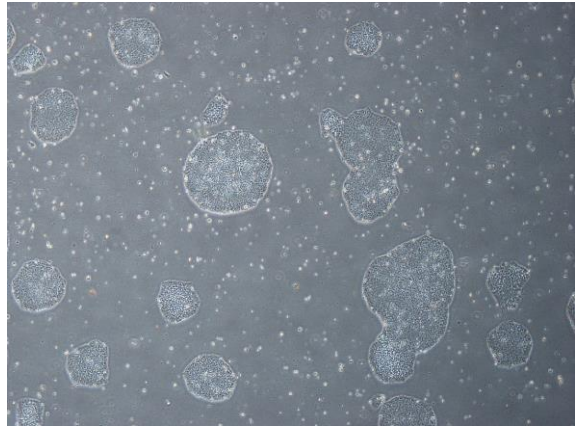


【 CiRA-j-1188 】 Morphology of iPSC colonies

CiRA-j-1188-A: passage-2



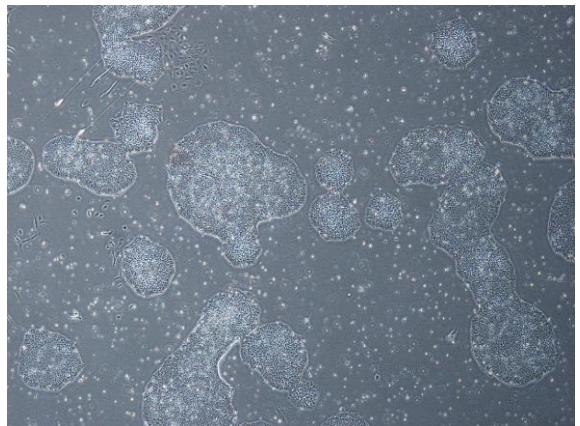
CiRA-j-1188-B: passage-2



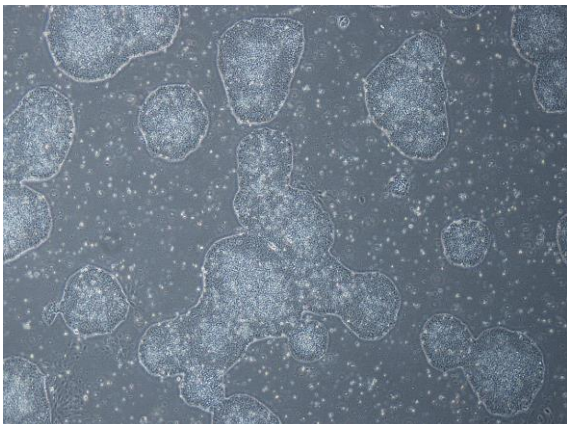
CiRA-j-1188-C: passage-2



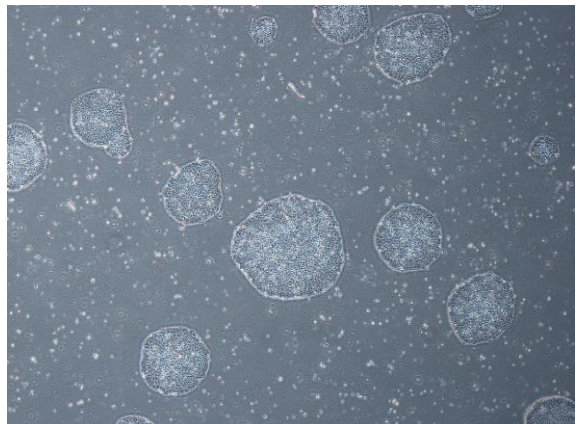
CiRA-j-1188-D: passage-2



CiRA-j-1188-E: passage-2



CiRA-j-1188-F: passage-2



(All images were captured at 4x magnification)